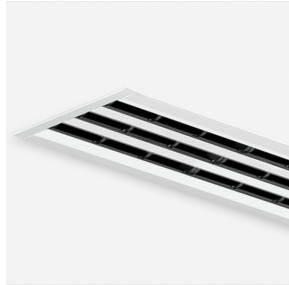
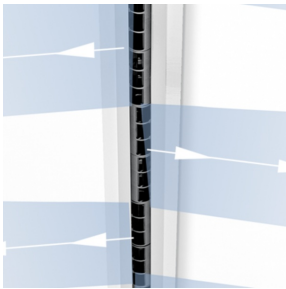


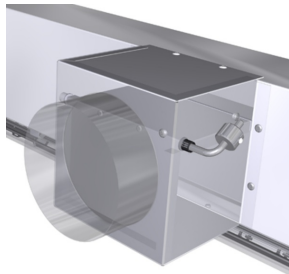
VSD35-1-VA/1200



INSTALLATION IN
CONTINUOUS CEILINGS



ALTERNATING
HORIZONTAL AIR
DISCHARGE



VARYSET FLAP WITH
BALANCE WEIGHT

VSD35 VARYSET

FOR LARGE, VARIABLE VOLUME FLOW RATE RANGES,
STABLE DISCHARGE PATTERNS EVEN WITH SMALL
VOLUME FLOW RATES

Slot diffusers with 35 mm nominal width, with adjustable air control elements and self-powered Varyset flap for the adjustment of the active slot diffuser length

- Nominal length from 900 to 1500 mm, 1 or 4 slots
- Volume flow rate range 8 - 90 (l/s)/m or 29 - 324 (m³/h)/m
- Diffuser face made of extruded aluminium sections
- For variable volume flows
- Excellent room ventilation even with small volume flow rates due to self-powered Varyset flap
- Suitable for continuous linear arrangement
- High induction results in a rapid reduction of the temperature difference and airflow velocity
- Individually adjustable air control elements to meet individual local requirements

Optional equipment and accessories

- Exposed diffuser face available in RAL CLASSIC colours
- Diffuser face with extended border

- End plates, end angles

Application



Application

- Type VSD35 Varyset slot diffusers are used as supply air diffusers in comfort zones
- They blend in inconspicuously with continuous grid ceilings and plasterboard ceilings
- Excellent room ventilation even with minimum volume flow rates (V_{\min})
- Air discharge is one-way or alternating horizontal, or alternating angled; turbulent flow (mixed flow ventilation)
- High induction results in a rapid reduction of the temperature difference and airflow velocity
- For variable volume flows
- For supply air to room air temperature differences from -10 to $+10$ K
- For room heights up to 4 m (lower edge of suspended ceiling)
- For suspended ceilings; suitable for restricted ceiling voids due to the low overall height of the plenum box
- Suitable for continuous linear arrangement

Special characteristics

- Individually adjustable air control elements to meet individual local requirements
- Excellent room ventilation even with minimum volume flow rates (V_{\min})
- High induction results in a rapid reduction of the temperature difference and airflow velocity
- Diffuser face has been optimised for maximum volume flow rate at low sound power levels
- Suitable for continuous linear arrangement

Nominal sizes

- L_N : 900, 1050, 1200, 1350, 1500 mm
- Diffuser face available in intermediate sizes from 901 to 2550 mm, in increments of 1 mm

Description



Variants

- VSD35-VA-*: 1, 2, 3 or 4 slots
- VSD35-VA-...: Diffuser face without extended border
- VSD35-VA-.../B00: Diffuser face with extended border
- VSD35-VA-...: Black air control elements
- VSD35-VA-.../WW: White air control elements,

Parts and characteristics

- Diffuser face with individually adjustable air control elements
- Plenum box for horizontal duct connection
- Self-powered Varyset flap with external balance weight
- Protective cap for the balance weight
- Clamp fixing
- Connecting pins and alignment plates to connect and align slot diffusers for a continuous linear arrangement

Attachments

- C1, C2: Two end plates
- C5, C6: Two end angles

Accessories

- Lip seal

Useful additions

- EP: Two end plates

- EW: Two end angles
- To be ordered separately for continuous linear runs
- Corner section, see Type VSD35

Construction features

- Spigot suitable for circular ducts to EN 1506 or EN 13180

Materials and surfaces

- Diffuser face made from extruded aluminium sections
- Air control elements made of plastic, UL 94, V-0, flame retardant
- Plenum box made of galvanised sheet steel
- Varyset flap, end plate and end angle made of aluminium
- Lip seal made of rubber
- Diffuser face with anodised finish, E6-C-0, natural colour
- P1: Powder-coated, RAL CLASSIC colour
- Air control elements similar to RAL 9005, black
- WW: Air control elements similar to RAL 9010, white

Standards and guidelines

- Sound power level of the air-regenerated noise measured according to EN ISO 5135

Maintenance

- Maintenance-free as construction and materials are not subject to wear
- Inspection and cleaning to VDI 6022